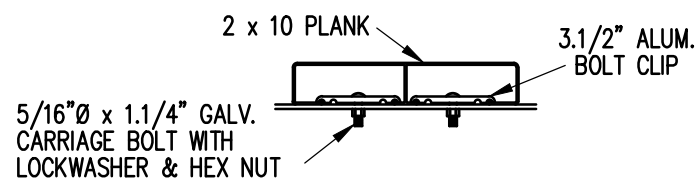


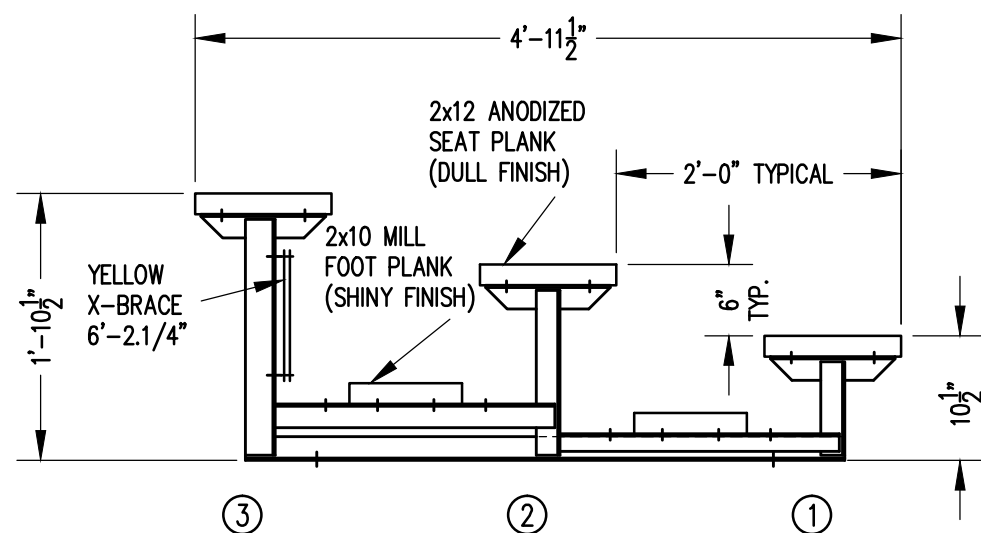
**SEAT & FRAMING PLAN**

1/4" = 1'-0"  
 18 NET SEATS @ 18" PER SEAT



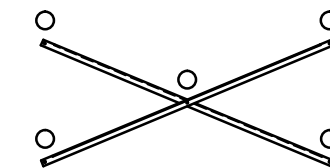
**BOLT CLIP DETAIL**

1.1/2" = 1'-0"



**SECTION AA**

3/4" = 1'-0"



**X-BRACE DETAIL**

N.T.S.

○ 7/16" x 1" GALV. MACH. BOLT

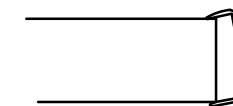


FIG.1

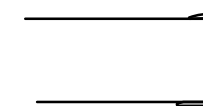


FIG.2

- 1) LOCATE THE CHANNEL END CAP AS SHOWN IN FIG. 1.
- 2) TAP END CAP INTO PLACE WITH RUBBER Mallet OR SOFT WOOD. FIG.2
- 3) DRILL 5/32" HOLES THROUGH THE BOTTOM FLANGE AND THE BOTTOM OUTSIDE PLANK FLANGES OF EACH PLANK. INSTALL 5/32" POP RIVETS.

**END CAP DETAIL**

N.T.S.

		P.O. BOX 118 GENEVA, ALABAMA 36340 334-684-2296			
		SCALE AS NOTED	REVISIONS	BY	DATE
DATE	11/2/11				
DR'N	CDK CKD				
AP'VD					
TITLE				NO.	
LDLW 3-9 SEATING/FRAMING PLAN				764-E1046	